

St Philip's Anglican Church

Rochedale

Parish Profile 2026



270 Rochedale Rd, Rochedale, QLD, 4123

Webpage: stphilsrochedale.church

Facebook: facebook.com/StPhilsRochedale

Youtube: youtube.com/@stphilsrochedale

Parish Background

St Philip's has been a parish in its own right since 1996 (after decades of faithful ministry to the people of Rochedale under the Evangelical umbrella of the Mt Gravatt and Wishart Parishes).

The 'Little Brown Church' on the corner of Miles Platting Rd and Gardner Roads in Rochedale served as our gathering place for worship, fellowship and outreach for many years, until the resumption of the Parish property by the Brisbane City Council for the expanding Rochedale development. In God's good timing, we were blessed with the provision of new premises at 270 Rochedale Rd, where we moved in October 2017.

The suburb of Rochedale is a growth area, with a large influx of new occupants due to the continuous addition of new housing developments in the old agricultural areas.

Who we are

We are quite a diverse body of believers in terms of age range and cultural mix, with members ranging in age from young children to elderly people, and people from various cultural backgrounds, including parts of Asia, India and the Pacific Islands. What unites us is our love for the Lord Jesus Christ and our desire to 'strive to help people know Jesus Christ and grow in him' (our Church Mission Statement).

What we believe

As an Evangelical church, our core beliefs are those of historical Biblical Christianity.

God:

We believe in one Triune God: Father, Son and Holy Spirit; eternal, infinitely powerful, wise and good; the Maker and Preserver of all things both visible and invisible. He is sovereign from beginning to end, from creation, revelation and redemption to final judgement and eternal glory.

Jesus Christ:

We believe in Jesus Christ, the Incarnate Son of God, conceived by the Holy Spirit and born of the virgin Mary, fully God and fully human and without sin. He came as Saviour, God's Anointed one, to redeem humans from slavery to sin through his death on the cross.

We believe in his historical, bodily resurrection from the dead and his ascension to the right hand of God the Father, from where he shall come to judge the living and the dead and usher in a new and eternal age.

The Holy Spirit:

We believe in the powerful work of regeneration that is performed by the Holy Spirit; that He alone mysteriously brings life and the light of the Word into the hearts of people and that He indwells every believer.

Humans:

We believe that humanity has been a fallen race since the time of Adam's disobedience, universally sinful and guilty of deliberately rejecting God, and therefore deserving of God's rightful condemnation and wrath.

Salvation:

We believe that justification of the sinner is by the grace of God through faith alone.

We believe that through Jesus Christ's substitutionary and sacrificial death, God has graciously provided the means of being reconciled with Him.

We believe that in Christ alone we have redemption from the penalty, control and guilt of sin.

We believe that this is the gospel that Christ has commanded us to declare.

The Bible:

We believe in the divine inspiration, supreme authority and absolute trustworthiness of Holy Scripture, delivered to the Apostles, unchanging, relevant and authoritative in all matters of faith, life and conduct.

Marriage and sexuality:

We believe that the Bible makes it clear that marriage is a God-ordained institution between a man and a woman only, and is meant to be a lifelong bond. Furthermore, this kind of marriage is the only allowable context for sexual intimacy.

Sundays

We have a single Sunday gathering at 9am, involving singing (mostly contemporary, with some hymns), prayer, preaching of the Word and communion (twice a month). We use content from *An Australian Prayer Book*, First Order. Our weekly service is broadcast on our Youtube Channel (youtube.com/@stphilsrochedale/streams).

Our children's ministry includes a Sunday school for children from K-6. This runs during the service in term times. We are in the process of reinstating our high school during-service Bible study, which has been on a break for several months.

There is a monthly prayer meeting after church on the first Sunday of each month.

A fellowship lunch is held after church one Sunday every term and is an enjoyable opportunity for our congregation to share a meal.

Other Ministries

We seek to have a growing culture of discipleship within St Philip's. Our prayer is that through the work of the Spirit as people mature in Christ, the work of discipleship and mission will grow 'organically' as our hearts and minds are changed and conformed to our Saviour.

Bible Study, Prayer and Fellowship:

We have several Bible study and prayer groups that meet weekly. These include women's, men's, mixed and young adult Bible study groups. We are keen to see a growing number of our members getting together for one-on-one Bible reading and prayer.

Men's and Women's Ministry gatherings:

There is a monthly meeting for men at which they share breakfast and then watch a video Bible talk by an external speaker.

We have had semi-regular women's breakfasts involving fellowship and Bible teaching or discussion in recent times. This ministry is not currently active.

Conversational English Classes

These weekly classes provide an opportunity for speakers of other languages to come and improve their English. There are 3 levels of classes (Beginner, Intermediate and Advanced). In addition to ESL content, the lessons include a short time of Bible input and morning tea is shared afterwards, followed by an extra, optional Bible study. This has been a popular and effective outreach activity, and a number of attendees have become followers of Jesus.

Gospel Outreach Courses

St Phil's seeks to provide opportunity for people to learn about Christ through Christianity Explained or Alpha Courses. We have run several Alpha courses, and a number of people have taken the Christianity Explained course.

After-school tutoring and tennis lessons

St Phil's offers after-school tutoring and tennis lessons twice a week. This is an opportunity to serve the community and provide opportunities for people to meet Christians.

Mission and the world

We are keen to support the work of mission in other areas of Brisbane, Queensland and Australia, as well as globally. We have ongoing involvement with and support of the following mission organizations and individuals who work with them.

- Church Missionary Society (CMS)
- Bush Church Aid Society (BCA)
- Fishers of Men (a local Christian drug and alcohol rehabilitation program)
- City Bible Forum
- We pray for Barnabas Aid (support for persecuted Christians worldwide) and have held a number of fundraising stalls to raise money for this organization.
- We have a group that meet regularly to refurbish, repair and cover second-hand Bibles, commentaries and high-quality books on Christian living. These are sent to Nigeria to support the church there.

- Christian Religious Instruction (CRI) in the local primary school was coordinated and taught by a St Phil's member for many years until the end of last year.

Monthly Cafe event

This social event is held on the church property on a weekday once a month. Morning tea is provided at a small cost, and church members are encouraged to bring neighbours and friends to enjoy hospitality.

Pastoral Care

Our pastoral care team serve members of St Phil's by providing meals for those in need and visiting elderly members confined to aged care residences.

We have also had a number of drives to collect household and pantry essentials to take to Goodna Parish.

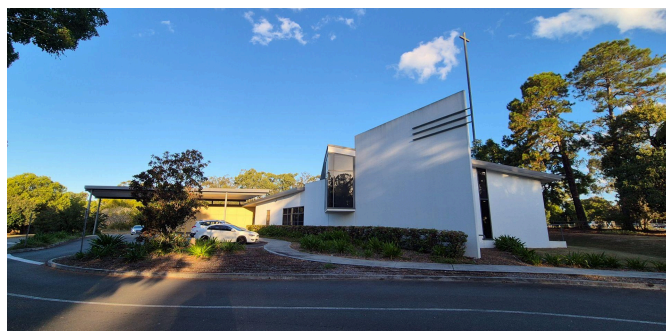
We have endeavoured to contribute to the general Logan community by collecting for Defenders for Hope, which supports women, children, and men impacted by domestic violence.

Staff

Our Parish has one full-time paid Minister who is supported by three Wardens and a Parish Council (elected and appointed members) along with lay member involvement across all ministry areas.

Facilities

The church building and land is set on 15 acres at 270 Rochedale Road and is a real blessing. We are very thankful to God for His provision. Due to the generous giving of our parishioners, there is no debt on the property.



Church building

The building itself was designed to provide an appropriate and flexible space for ministry, with the indoor area being able to be separated into sanctuary and hall or opened up into one usable space. The kitchen facilities enable service either into the hall or out to a covered area, enabling great flexibility in the service of food and drink. There is an office, board room, two secondary office/meeting rooms and two flexible rooms at the back of the hall area which are used primarily for children's ministry. We have a soundproof cry room which enables viewing and listening during services.



Grounds and facilities

The grounds are spacious and provide ample room for quiet meditation. There is a full-sized tennis court which has provided fellowship and outreach opportunities.



Church house

The house on the church property was refurbished by parishioner donation to assist parishioners and community members in need. It is currently rented by a member of our congregation and another person.



Opportunities and Challenges

Our diverse local area

As mentioned, the suburb of Rochedale has expanded greatly over the last decade and continues to do so. The growth has included many people of different races and cultures. This represents a huge opportunity. We are keen to reach many in this area with the good news of Jesus. We hope that the cultural diversity within our own congregation will give us insight into how to best reach our neighbours.

A range of ages

The range of ages in the church presents another challenge and opportunity, as we seek to provide appropriate ministries across the age spectrum. We are keen to see more young families regularly attending, and to provide a spiritual environment in which they can grow in Christian discipleship. A significant proportion of our congregation is becoming elderly, which presents an opportunity and challenge to care well for one another.

The need for leaders

There are a number of ministries that we would love to expand or re-establish, but there is a shortage of people to lead them (people are already involved in multiple ministries).

The person we are we looking for

We are looking for a man with the following qualities:

- a mature and sincere faith in the Lord Jesus, evidenced in a godly, loving character;
- demonstrated integrity in all areas of life;
- a firm belief in the authority and power of the Word of God;
- dependence on God in prayer;
- a shepherd's heart, committed to feeding, protecting, training, equipping and leading his flock;
- the ability to prepare and deliver clear, Biblically-faithful expository sermons;
- a commitment to evangelism and discipleship in obedience to the Great Commission (Matt. 28:18-20);
- fulfilment of the requirements for overseers given in 1 Tim 3:1-7, Titus 1:5-9 and 1 Peter 5:1-4;
- the ability to complete a range of administrative tasks
- interpersonal and leadership skills
- an ability to work within the context of the broader church of the Diocese of Brisbane

Finally ...

Whatever the future holds, 'We strive to help people know Jesus Christ and grow in Him'.

We will be continually praying for our new Minister and look forward to meeting him in God's good timing and provision!

For further information and enquiries, email Bishop John Roundhill:

jroundhill@anglicanchurchsq.org.au

St Philip's Anglican Church, Rochedale

Position Description Priest-in-Charge

Position Summary

Position	Priest-in-Charge
Location	St Philip's Anglican Church 270 Rochedale Rd, Rochedale, 4123
Employment	Permanent Full-Time (1FTE = 76 hours per fortnight)
Remuneration	Determined and negotiated according to Anglican Church of Southern Queensland Diocesan Scales (including housing, vehicle and telephone allowances)
Published	2 June 2026

Background to the role:

St Philip's is an Evangelical Anglican church in the growing suburb of Rochedale in Brisbane's South East. We are a community of approximately 100 members, with a current average weekly attendance of 55-60. We have existed as a parish in our own right since 1996.

Our current minister is currently on leave until November 2026, when he will retire. We are seeking a man who will lead our congregation forward in love and service of Christ and his kingdom.

Requirements

Character

We are looking for a man with the following qualities:

- a mature and sincere faith in the Lord Jesus, evidenced in a godly, loving life
- demonstrated integrity in all areas of life
- dependence on God in prayer
- a shepherd's heart, committed to feeding, protecting, training, equipping and leading his flock
- servant-heartedness, including humility and a willingness to listen
- fulfilment of the requirements for overseers given in 1 Tim 3:1-7, Titus 1:5-9 and 1 Peter 5:1-4

Convictions

We are looking for a man who:

- believes that salvation is in Christ alone through faith alone by grace alone
- believes in the divine inspiration, supreme authority and absolute trustworthiness of Holy Scripture in all matters of faith, life and conduct
- believes in the power of the word of God and the importance of expository preaching and teaching
- believes that we are entirely dependent on God through prayer for any fruit in ministry
- demonstrates a commitment to evangelism and discipleship in obedience to the Great Commission (Matt. 28:18-20)

Skills

The candidate should have a demonstrated ability to:

- prepare and deliver clear, Biblically-faithful expository sermons
- consistently show leadership and interpersonal skills in working with parish leaders and the general congregation
- mentor and equip leaders and potential leaders
- provide sensitive and Biblical pastoral care
- complete a range of administrative tasks in a fair, transparent and truthful manner
- manage and balance tasks and priorities

Prerequisites

The candidate should have:

- an approved theological degree
- ordination as an Anglican Minister
- eligibility for licensing as a Priest-in-Charge in the Diocese of Brisbane
- completion of the Diocesan Safe Ministry Check
- a current Blue Card (QLD Working with Children Check) (or eligibility to apply)
- a current Australian Criminal History Check (or eligibility to apply)

Responsibilities

The Priest-in-Charge will be required to:

- preach weekly at the Sunday service
- provide oversight and support for leaders in our various ministries, including the following:
 - Bible study small groups
 - Children's Sunday school
 - Youth and young adults
 - Men's and Women's ministries
 - Evangelism through Christianity Explained and Alpha
 - Pastoral care
- provide pastoral care and visitation, where required, to congregation members
- seek opportunities to serve, share the gospel and make disciples of Jesus in our local area
- foster a church culture of commitment to mission in Australia and overseas
- foster a church culture of prayerful dependence on God
- foster a church culture of personal discipleship and growth to maturity
- encourage, mentor and equip current and future leaders in the church;
- officiate sacraments and ceremonies as required (the Lord's Supper, baptisms, dedications, weddings, funerals)
- oversee the administration of the church and ensure that we are meeting the Safe Ministry requirements of the diocese
- lead Parish Council and other administrative meetings.